



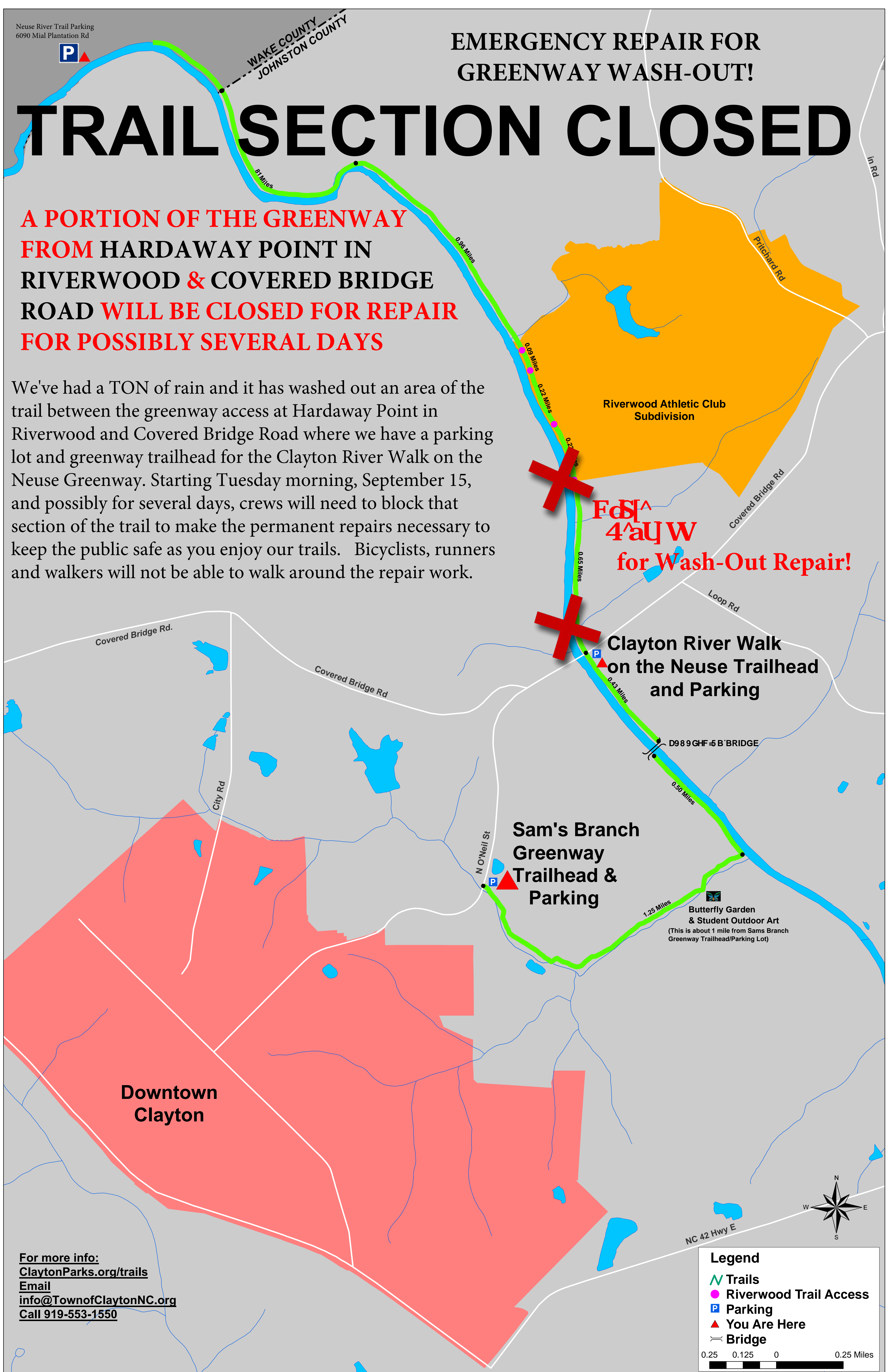
WAKE COUNTY
JOHNSTON COUNTY

EMERGENCY REPAIR FOR GREENWAY WASH-OUT!

TRAIL SECTION CLOSED

**A PORTION OF THE GREENWAY
FROM HARDAWAY POINT IN
RIVERWOOD & COVERED BRIDGE
ROAD WILL BE CLOSED FOR REPAIR
FOR POSSIBLY SEVERAL DAYS**

We've had a TON of rain and it has washed out an area of the trail between the greenway access at Hardaway Point in Riverwood and Covered Bridge Road where we have a parking lot and greenway trailhead for the Clayton River Walk on the Neuse Greenway. Starting Tuesday morning, September 15, and possibly for several days, crews will need to block that section of the trail to make the permanent repairs necessary to keep the public safe as you enjoy our trails. Bicyclists, runners and walkers will not be able to walk around the repair work.



**For
4' x 4' W
for Wash-Out Repair!**

**Clayton River Walk
on the Neuse Trailhead
and Parking**

**Sam's Branch
Greenway
Trailhead &
Parking**

**Butterfly Garden
& Student Outdoor Art**
(This is about 1 mile from Sams Branch
Greenway Trailhead/Parking Lot)

**Downtown
Clayton**

For more info:
ClaytonParks.org/trails
Email
info@TownofClaytonNC.org
Call 919-553-1550

Legend

- Trails
- Riverwood Trail Access
- Parking
- You Are Here
- Bridge

0.25 0.125 0 0.25 Miles