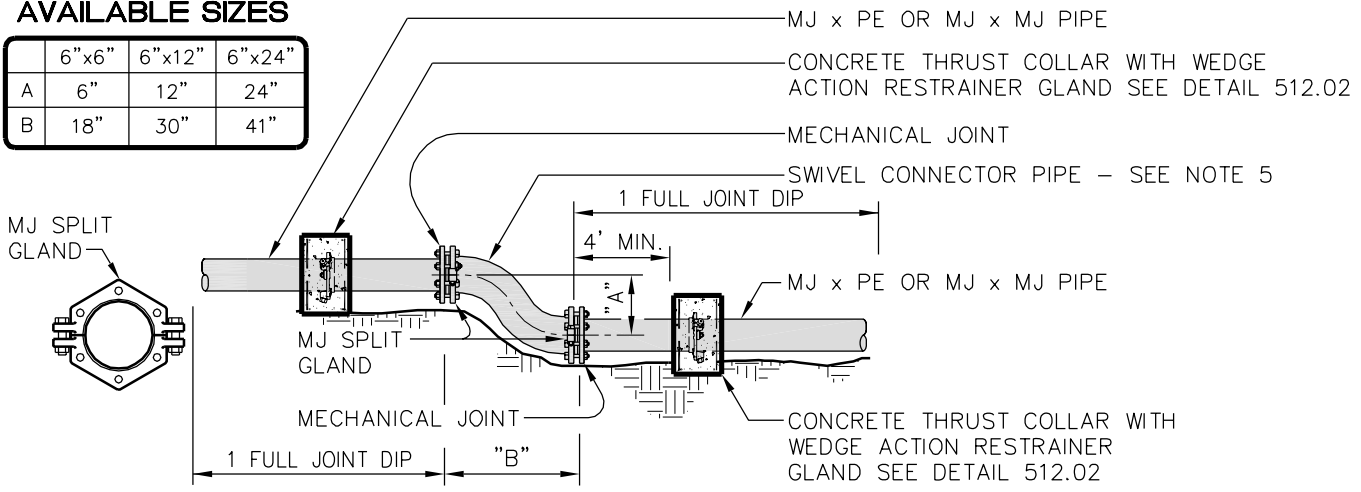


ALTERNATE SWIVEL CONNECTOR (6" WATER LINE)

AVAILABLE SIZES

	6" x 6"	6" x 12"	6" x 24"
A	6"	12"	24"
B	18"	30"	41"



NOTES:

1. See Tie Rod Anchors Datum Chart, detail 512.06 for quantity & sizing of rodding.
2. The bypass is to be assembled above ground first.
3. Record all as-built lengths using the center lines of the pipes or bends as reference points.
4. Adapters vary in type according to the material of the existing water main.
5. Compact ductile iron (350 p.s.i.) fire hydrant offset connector pipe (AWWA C-110-ANSI A21.4) equal to or exceeding "GRADE LOK" as manufactured by: Assured Flow Sales, Inc., 1-(800)-388-0678



TOWN of CLAYTON

USE WITH THE TOWN of CLAYTON STANDARD SPECIFICATIONS ONLY

VERTICAL BEND, RODDING, and BLOCKING DETAIL

SCALE: Not To Scale	DETAIL # 2 512.04
REVISION DATE: July, 2010	SHEET #: 1 of 1