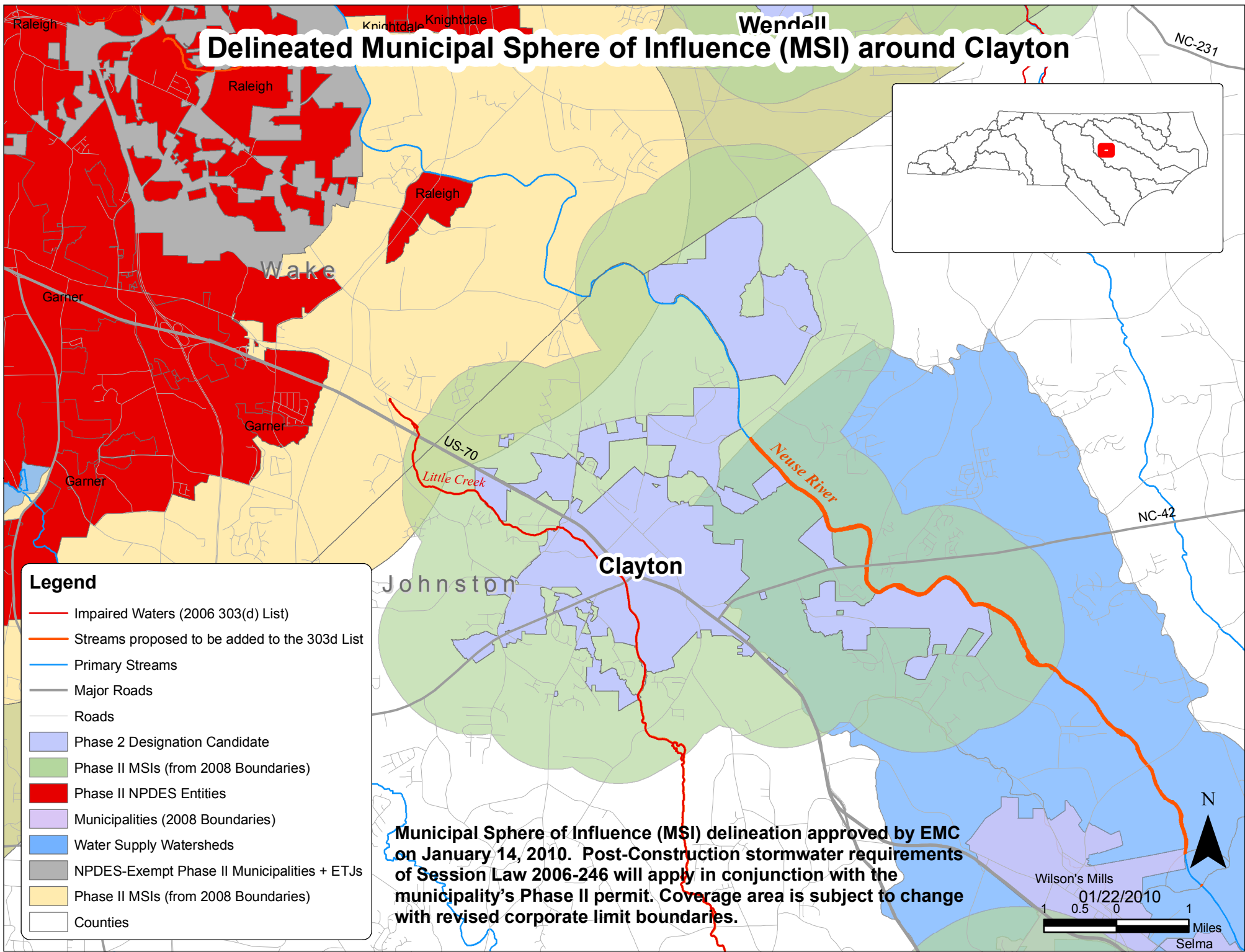


Delineated Municipal Sphere of Influence (MSI) around Clayton



- Legend**
- Impaired Waters (2006 303(d) List)
 - Streams proposed to be added to the 303d List
 - Primary Streams
 - Major Roads
 - Roads
 - Phase 2 Designation Candidate
 - Phase II MSIs (from 2008 Boundaries)
 - Phase II NPDES Entities
 - Municipalities (2008 Boundaries)
 - Water Supply Watersheds
 - NPDES-Exempt Phase II Municipalities + ETJs
 - Phase II MSIs (from 2008 Boundaries)
 - Counties

Municipal Sphere of Influence (MSI) delineation approved by EMC on January 14, 2010. Post-Construction stormwater requirements of Session Law 2006-246 will apply in conjunction with the municipality's Phase II permit. Coverage area is subject to change with revised corporate limit boundaries.

N

Wilson's Mills
01/22/2010
1 0.5 0 1 Miles
Selma